



## INSTRUCTIONS

4601K12P0001

CAUTION: Before installing in a nuclear application, determine that the product is intended for such use.

### TYPE 180 EDGEWISE INSTRUMENT

Cut the panel as indicated in Fig. 1. All drilling and wiring on the switch-board should be completed before mounting the instruments. It is advisable to keep wires carrying heavy current as far as possible from all indicating instruments.

A-C instruments should be connected as shown in Fig. 2 to obtain best results. No leads should be placed adjacent to the edges (the narrower side) of the instrument case. Leads may be brought back from the rear of the case at any angle. The leads for ammeters with full-scale ratings of 20 amperes or more, if the leads are to be attached to the panel, should be arranged as shown in Fig. 3.

### CARE OF PLASTIC CASE

#### CLEANING

To clean the plastic case, wash it with soap and water. To remove grease or oil, use kerosene sparingly. DO NOT use acetone, benzene, carbon tetrachloride, fire-extinguisher fluids, lacquer thinners, or window sprays containing these solvents, since they will smear and soften the window. After cleaning, treat the window with an antistatic agent as described below.

#### REMOVAL OF ELECTROSTATIC CHARGE

It is recommended that the case and window be wiped or blotted periodically with a clean chamois or soft cloth dampened with antistatic solution. This must be performed after each window cleaning. Do not rub the window with a dry cloth as this is likely to cause scratches and build up an undesirable electrostatic charge.

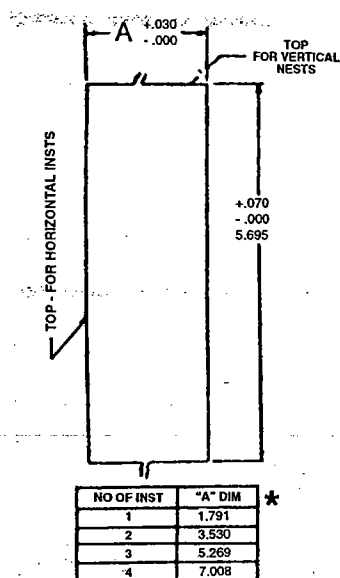
### RENEWAL PARTS

The parts listed below may be obtained through the nearer Yokogawa Corp. of America Sales office.

<u>Part Name</u>	<u>Aluminum Color</u>	<u>Black Color</u>
	<u>Cat. No.</u>	<u>Cat. No.</u>
Gasket	3829K13P001	3829K13P001
Trim Piece	8688K10P002	8688K10P003
Mounting and Terminal Hardware	4149K16G766	4149K16G766
Cover Assembly	2827K24G701	2827K24G711
Light Bulb (6.3V)	4868K33P003	

*These instructions do not purport to cover all details or variations in equipment nor to provide for every possible contingency to be met in connection with installation, operation or maintenance. Should further information be desired or should particular problems arise which are not covered sufficiently for the purchaser's purposes, the matter should be referred to the Yokogawa Corporation of America.*

YOKOGAWA CORPORATION OF AMERICA



\*For 5 or more instruments, add 1.739" to Dim. A for each additional instrument.

Fig. 1. Panel Cutout Dimensions.

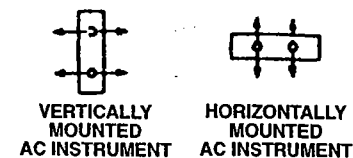


Fig. 2. Lead Dress for A-C Instruments.

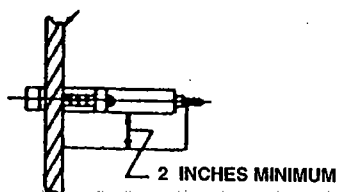


Fig. 3. Lead Dress for High-Current Ammeters.

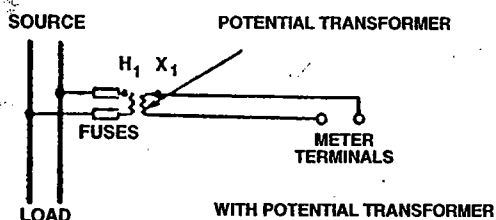
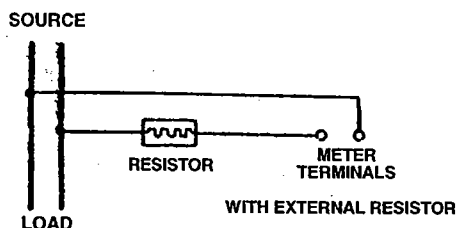
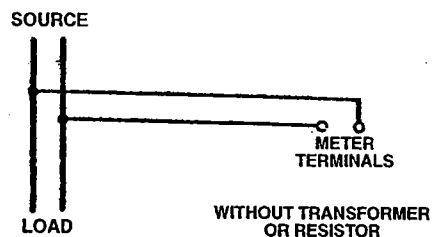


Fig. 4. External Connections, A-C Voltmeters.

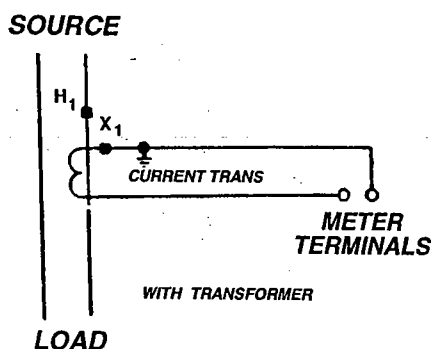
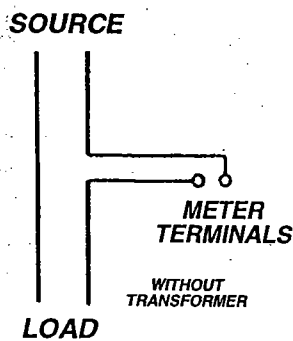


Fig. 5. External Connections, A-C Ammeters.

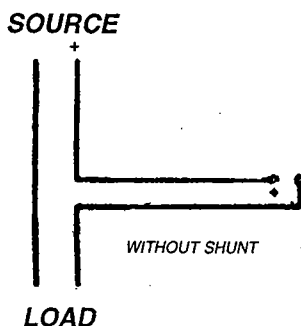
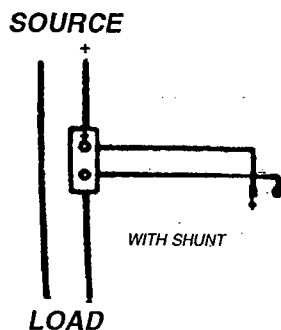
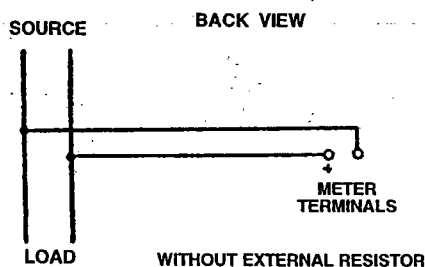


Fig. 6. External Connections, D-C Ammeters.

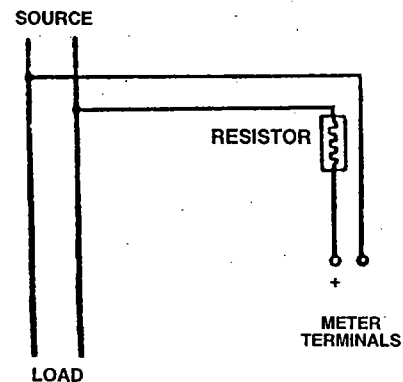


Fig. 7. External Connections, D-C Voltmeters.