



REGULATORY AGENCY APPROVALS



E93779



LR89403

Manufactured to meet the requirements of ANSI/IEEE C57.13.
Classified by U.L. in accordance with IEC 44-1

APPLICATION:
Metering.

FREQUENCY:
50-400 Hz.

INSULATION LEVEL:
600 Volts, 10 kV BIL full wave.

Terminals are brass studs No. 8-32 with one flatwasher, lockwasher and regular nut.

Flexible leads are UL 1015, 105°C CSA approved, #16 AWG 24" long.

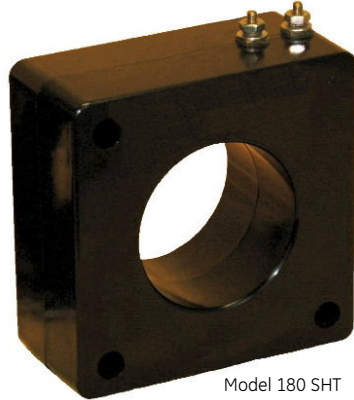
Non-standard lead length can be specified.

Order mounting bracket kit 0221B00777 separately for Model 180SHT.

Approximate weight 3.5 lbs.



Model 180 RL



Model 180 SHT

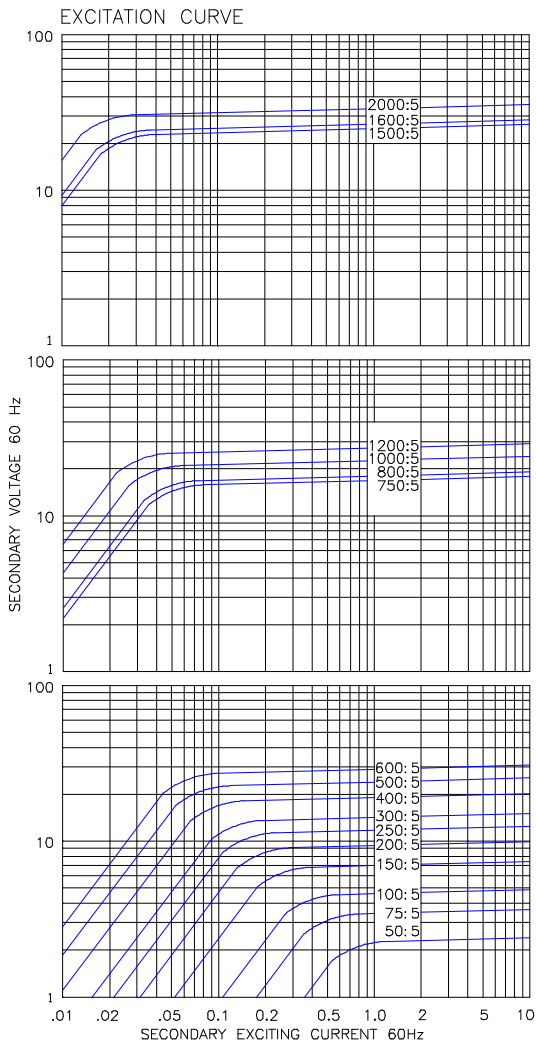
2

CATALOG NUMBER	CURRENT RATIO	V.A. ± 1% CLASS	ANSI METERING CLASS AT 60HZ					SECONDARY WINDING RESISTANCE (OHMS @ 75°C)	CONTINUOUS THERMAL RATING FACTOR	
			BO.1	BO.2	BO.5	BO.9	B1.8		@ 30°C	@ 55°C
180**–500	50:5	1.5	2.4	–	–	–	–	0.009	1.33	1.0
180**–750	75:5	2.5	1.2	2.4	–	–	–	0.018	1.33	1.0
180**–101	100:5	2.5	1.2	2.4	4.8	–	–	0.021	1.33	1.0
180**–151	150:5 *	5.0	0.6	1.2	2.4	4.8	–	0.038	1.33	1.0
180**–201	200:5 *	12.5	0.6	0.6	1.2	2.4	–	0.051	1.33	1.0
180**–251	250:5 *	12.5	0.3	0.3	0.6	1.2	–	0.064	1.33	1.0
180**–301	300:5 *	25.0	0.3	0.3	0.6	1.2	2.4	0.076	1.33	1.0
180**–401	400:5 *	50.0	0.3	0.3	0.3	0.6	1.2	0.102	1.33	1.0
180**–501	500:5 *	50.0	0.3	0.3	0.3	0.6	1.2	0.148	1.33	1.0
180**–601	600:5 *	50.0	0.3	0.3	0.3	0.6	1.2	0.177	1.33	1.0
180**–751	750:5 *	50.0	0.3	0.3	0.3	0.6	1.2	0.174	1.33	1.0
180**–801	800:5 *	75.0	0.3	0.3	0.3	0.6	1.2	0.202	1.33	1.0
180**–102	1000:5 *	100.0	0.3	0.3	0.3	0.3	0.6	0.253	1.33	1.0
180**–122	1200:5 *	125.0	0.3	0.3	0.3	0.3	0.3	0.303	1.33	1.0
180**–152	1500:5 *	160.0	0.3	0.3	0.3	0.3	0.3	0.307	1.33	1.0
180**–162	1600:5 *	175.0	0.3	0.3	0.3	0.3	0.3	0.359	1.25	1.0
180**–202	2000:5 *	200.0	0.3	0.3	0.3	0.3	0.3	0.449	1.0	0.75

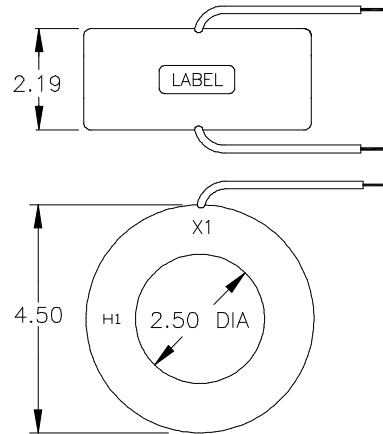
**Note: When ordering, prefix Cat No. with model designation required i.e. 180RL-301, 180SHT-301, etc.
Approved for revenue metering by Industry Canada No. T-189

Model 180

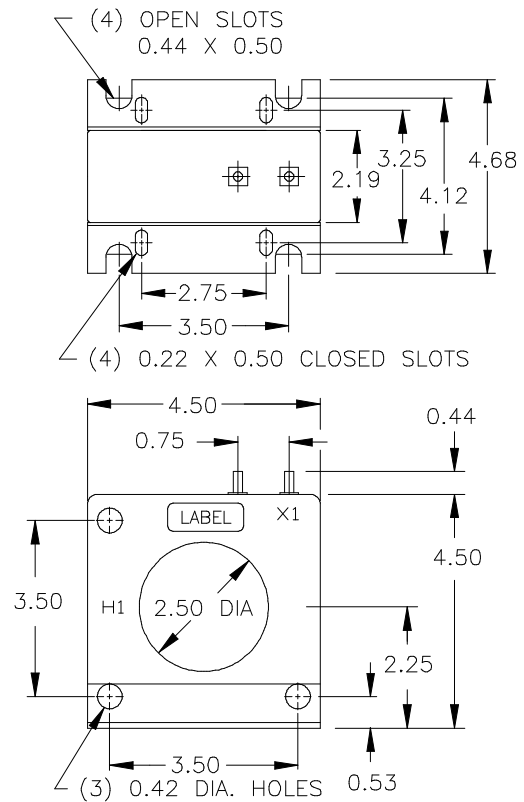
2



Model 180RL



Model 180SHT



USA, Canada, Asia, Latin America
 Tel: +1-800-547-8629
 Fax: +1-905-201-2455
 e-mail: sales.multilin@ge.com

Europe, Middle East, Africa
 Tel: +34-94-485-88-00
 Fax: +34-94-485-88-45
 e-mail: gmultilin.euro@ge.com